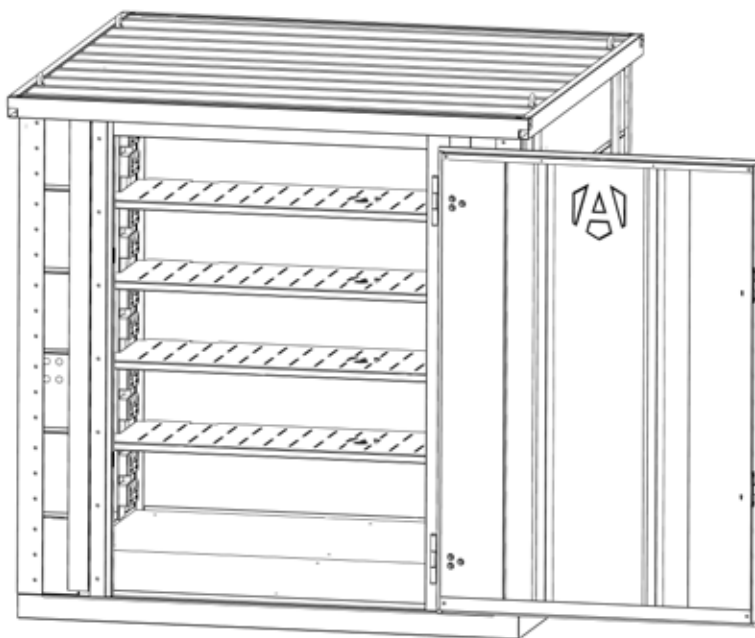




powerstorTM

Operational and maintenance manual

Suitable for: FR200-P





Welcome

Welcome to your Armorgard PowerStor. Supplied pre-assembled and immediately ready for use, providing the solution to safely and securely charge tool batteries on site.

Please read this operational and maintenance manual carefully prior to using the PowerStor.

Contents

Safety information.....	4
Electrical safety information.....	5
Product routine inspection.....	6
Product specification.....	7
What's included.....	8
You'll need.....	9
Getting to know your PowerStor.....	10
How to assemble.....	11
How to use.....	12
Using the lifting eyes.....	13
Optional extras.....	14
Attaching the Blokkabar (optional extra).....	15
Using the Blokkabar (optional extra).....	16
Attaching the ramp (optional extra).....	17
Storing the unit.....	18
Transporting the unit.....	19
Equipment care.....	20
Ongoing maintenance.....	20
Warranty.....	21
Spare parts.....	21
Notes.....	22



Safety information

- » Before using the PowerStor, ensure any relevant risk assessments are carried out. Armorgard cannot be responsible for accidents that occur due to negligence or misuse.
- » Ensure the PowerStor is not damaged before using it.
- » Lock the PowerStor when not in use or out of sight.
- » All personnel using the PowerStor should be familiar with safe operating procedures.
- » Do not tamper with, or alter the fire suppression system installed at any time.
- » In order for the fire suppression system to work effectively, the door **MUST** be kept closed at all times when unoccupied.
- » We always recommend carrying out a fire risk assessment prior to installation and integrate with external fire alarm systems where possible.
- » The PowerStor must be positioned on a flat, solid surface, and should be level and stable before being used.
- » Ensure the PowerStor is thoroughly examined before lifting via crane or moving it. Only qualified personnel should lift the PowerStor.
- » If the fire suppression system is activated, the PowerStor should be taken out of use immediately by switching off the power and the fire brigade called. Armorgard should also be consulted without delay.
- » We recommend positioning the PowerStor outdoors and at least 3.0m away from other buildings and fire hazards.
- » Never lock the PowerStor with anybody inside the unit.
- » We recommend getting a qualified engineer to connect the PowerStor into the existing fire/smoke alarm systems on the premises.
- » The unit should be located as furthest away from other infrastructure/buildings as is practically possible. The unit must also not be stored in proximity of flammable and hazardous substances. Locate the unit on level ground.

-
- » We recommend for the unit to be best placed in a shaded position for keeping temperatures cool.
 - » Regular visual inspections are necessary and to be done by a trained person - a specialist/expert is not required for this.
 - » Please note that the electrical equipment installed within the PowerStor is not ATEX rated. Please contact Armorgard as upgrades on the unit are available on an extra cost.

Electrical safety information

- » Ensure an assessment has been made of any electrical hazards before using it.
- » Make sure that workers know how to use the electrical equipment safely.
- » Ensure there are no trailing cables that can cause people to trip or fall.
- » Check that socket outlets are not overloaded by using unfused adaptors as this can cause fires.
- » Switch off and unplug appliances before cleaning or adjusting them.
- » Stop using equipment immediately if it appears to be faulty or damaged – have it checked by a competent person.
- » Turn off all appliances when not in use.
- » The product requires a 32A, 240V supply lead.
- » Qualified personnel should determine the relevant earthing requirements have been met to BS7671:2018.
- » An earth tag is provided if equipotential bonding is required.



Product routine inspection

- » The PowerStor arrives fully tested to current UK regulations. It is the customer's responsibility to carry out all relevant electrical testing on an annual basis.
- » A competent person should regularly check the red fuse cord and fire suppression system for any damage. Any damage should be immediately reported.
- » The fire suppression system is 15 years maintenance free.
- » If connected into an existing fire/smoke alarm system, the PowerStor should become part of the routine alarm testing schedule.

Whilst every effort has been made to ensure this operational and maintenance manual covers every aspect needed to operate your product safely, please take care whilst using the product and always operate with caution. Always liaise with management personnel on site for any additional operational restrictions that you need to be aware of. Risk assessments should always be carried out when using any equipment.

Do	Don't
✓ Secure all locks when not in use	✗ Leave unlocked when unattended
✓ Keep door closed when unoccupied	✗ Lift when loaded
✓ Ensure it's safe when opening/closing door	✗ Forget to do integrity checks before lifting
✓ Use only for PAT tested charging equipment	✗ Position on an uneven surface

Product specification

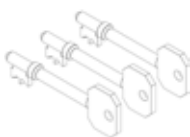
Product Code	Description	Weight (kg)	External Dimensions W x D x H (mm)	Internal Dimensions W x D x H (mm)
FR200-P	PowerStor	464	2075x2075x2160	1920x1850x1795



What's included...



1x PowerStor unit



3x keys



5x shelves



16x RCD protected
double sockets



1x fire suppression
system

You'll need...

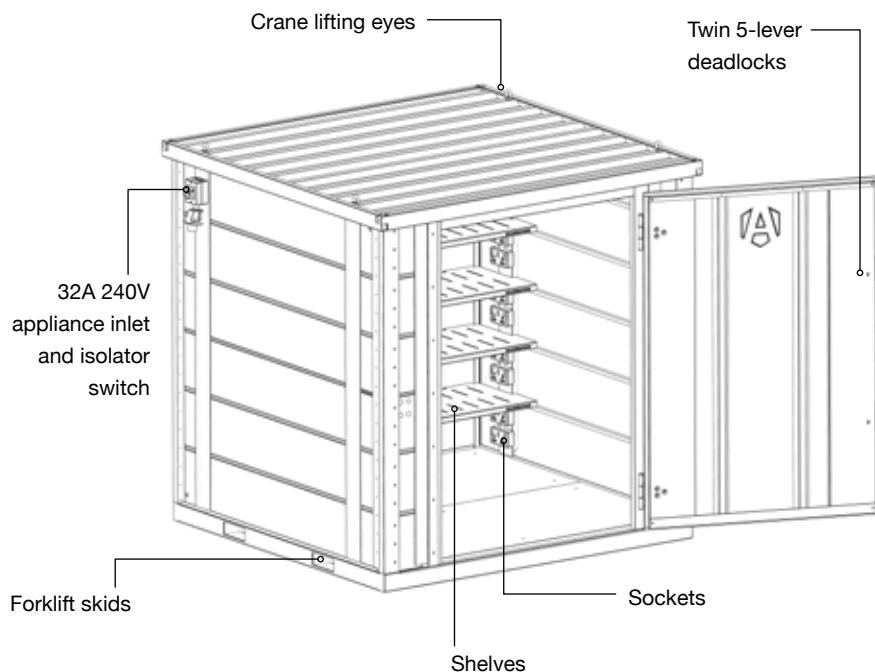


1x 32A extension lead



Getting to know your PowerStor™

Safely and securely charging tool batteries
on site with the PowerStor.



5-lever
deadlock



Forklift skids



Crane lifting
eyes

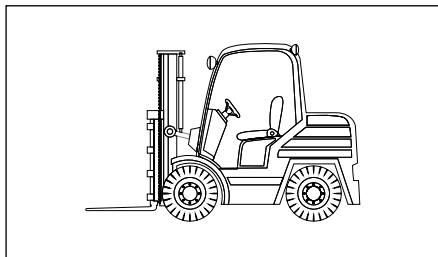


Light supply



Power supply
240V

How to assemble



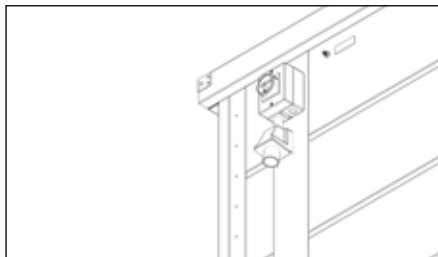
- 1.** PowerStor arrives fully assembled, you will require a forklift or pallet truck when unloading your PowerStor.



- 2.** It is important to check that product is not damaged upon arrival and all parts are intact, particularly assessing electrical components.



How to use



- 1.** Simply plug the unit in to a power source using a 32A extension lead. Always carry out a risk assessment prior to doing so.

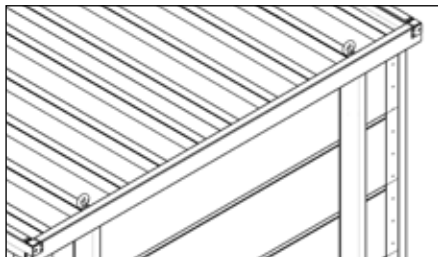


- 2.** Inside the unit is a fused light switch. This can be used to indicate that there is power supplied into the unit.

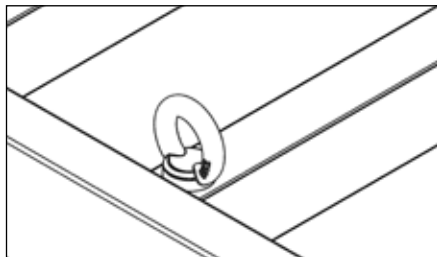


- 3.** We recommend getting a qualified engineer to connect the PowerStor into any existing fire and smoke alarm systems on the premises.

Using the lifting eyes



- 1.** Before lifting, ensure that the bolts holding the lifting eyes are securely in place.



- 2.** Attach the lifting equipment to all four lifting eyes and ensure that the load is lifted evenly across all four eyes.

The lifting eyes are only provided for positioning of the PowerStor, and the unit must be empty while lifting. Before lifting, each lifting eye needs to be checked that it is undamaged and fitted correctly, and should be inspected by a lifting operator before use.



Take your PowerStor™ to the next level with these optional extras

Contact the Armorgard team to find out more about the optional extras for your product.



BlokkaBar

To enhance your
PowerStor's security



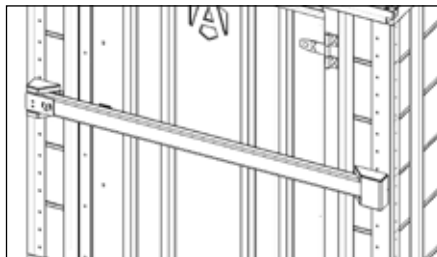
Ramp

To improve
accessibility when
moving heavy
equipment

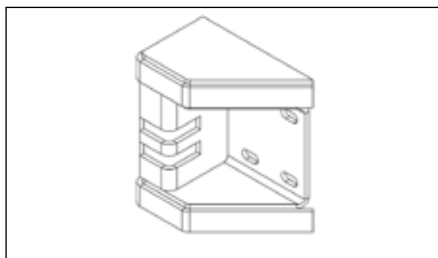
Attaching the BlokkaBar (optional extra)



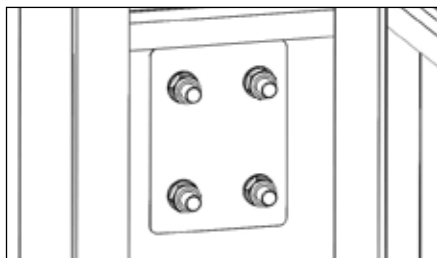
- 1.** To install the BlokkaBar, locate the pre-drilled holes on either side of the door. Then, remove the coach bolts and blanking plate.



- 2.** Place the lock housing of the BlokkaBar on the left side of the door. The other housing should be placed on the right side of the door.



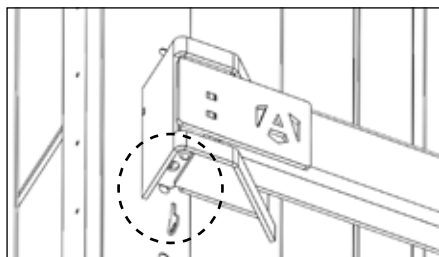
- 3.** Ensure the padlock is located in the locking housing with the lock facing down. Push the coach bolts through the holes in each housing and place into the pre-drilled holes in the PowerStor.



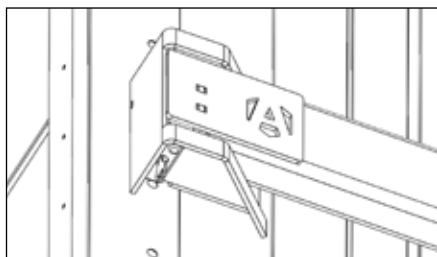
- 4.** Inside the PowerStor, replace with the blanking plate and then place a washer and nylock nut on each bolt. Repeat for both housings.



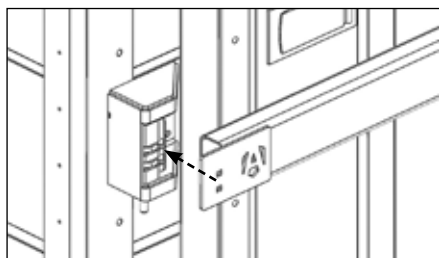
Using the BlokkaBar (optional extra)



1. To unlock the BlokkaBar, place the key in the keyhole of the lock on the bottom, and turn. This will unlock, releasing the pin.



2. Remove the bar by pulling it and sliding it to the left. This will allow the access to the door's locking system.



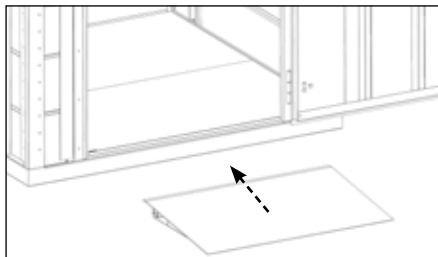
3. To lock for maximum security, ensure that the PowerStor door is locked before placing the BlokkaBar. Slide the bar in place.



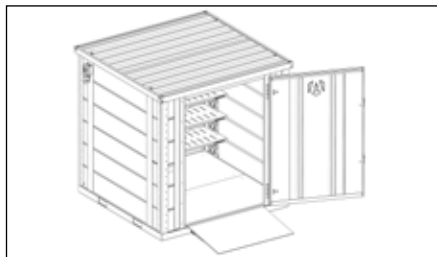
4. Then, push in the pin of the lock that is located at the bottom of the left lock housing of the BlokkaBar, this will ensure everything is secure in place.

Important! Please note that spare keys are not available for the BlokkaBar.

Attaching the ramp (optional extra)



- 1.** Position the ramp along the opening of the PowerStor, with the doors of the unit open to improve accessibility when moving equipment.



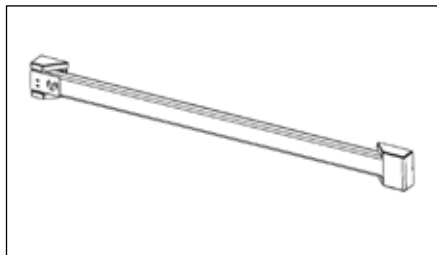
- 2.** When using the ramp, do not exceed the 2200lbs UDL that it was designed for. Do not close the door whilst the ramp is in position.



Storing the unit



- 1.** To save space. PowerStors can be safely stacked up to 2 storeys high when empty.



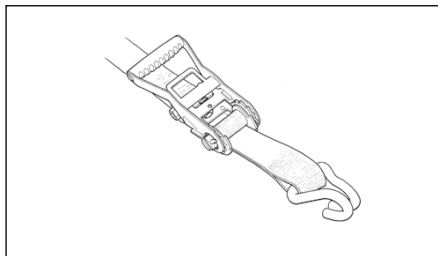
- 2.** Ensure that all locks are secured when leaving the PowerStor unattended. Use the BlokkaBar to enhance security if needed.

Transporting the unit

The PowerStor has been designed specifically to make transporting the product easy.

The four crane lifting eyes come with the PowerStor and are attached to the roof. These are for ease of transporting the unit only. The unit should never be lifted when loaded.

Always use the forklift pockets when transporting by forklift.



1. During transport, ensure that the PowerStor is secured to the carrier by strapping down the unit fully.



Equipment care

The PowerStor is weather resistant and constructed with a durable powder coated finish, so it is suitable for outdoor use. It is always important to note that any electrics or equipment susceptible to water damage should be sealed and placed higher up the PowerStor, using the shelves if necessary.

It is important to ensure that all PowerStor bolts remain in good condition and that they are always bolted on tightly.

Always ensure that the product data plate remains visible and in good condition, especially the unique serial number, as this is required should you need a replacement lock or key.

Ongoing maintenance

It is important to check that the PowerStor is not damaged before every use.

We recommend for you to check the bolts, locks, forklift pockets, crane lifting eyes, plug sockets and any optional extras every three months, to ensure that the PowerStor can operate fully. If the PowerStor will be under rigorous use, we recommend integrity checking regularly.

Always carry out integrity checks before lifting the PowerStor.

The PowerStor arrives fully tested to current UK regulations. It is the customer's responsibility to carry out all relevant electrical testing on an annual basis.

A competent person should regularly check the red fuse cord and fire suppression system for any damage. Any damage should be immediately reported.

The fire suppression system is maintenance free and has a 15 year shelf life.

If connected into an existing fire/smoke alarm system, the PowerStor should become part of the routine alarm testing schedule.

Warranty

Armorgard products are built to last, and all have a manufacturer's warranty of 12 months - please refer to the terms and conditions for what this covers.

We also keep replacement keys and offer replacement locks for all Armorgard products up to five years old. To get a replacement key, all you'll need is the distributor you purchased from, proof of purchase and your product's serial number, which can be found on the data plate of every product.

Do not force entry into the product, as this could affect the warranty. Always contact us if you require a replacement lock or key.

Spare parts



Replacement
keys



Crane lifting
eyes



Fire suppression
system



Replacement
deadlocks



Extra
panels



For additional support and easy access to spare or replacement parts, register your product following the QR code:





Notes

Notes



Find us on social media:



UK Head Office

Unit 14-16, Standard Way, Fareham Industrial Park, Fareham, Hampshire, PO16 8XB
+44 (0) 23 9238 0280 | sales@armorgard.co.uk | www.armorgard.co.uk

France Office

+ 33 (0) 4 81 16 06 69
commercial@armorgard.fr
www.armorgard.fr

Australia Office

+61 (0) 1300 131 751
sales@armorgard.com.au
www.armorgard.com.au

New Zealand Office

0800 826 828
sales@armorgard.co.nz
www.armorgard.co.nz

North America Office

1-877-794-2848
info@armorgardusa.com
www.armorgardusa.com